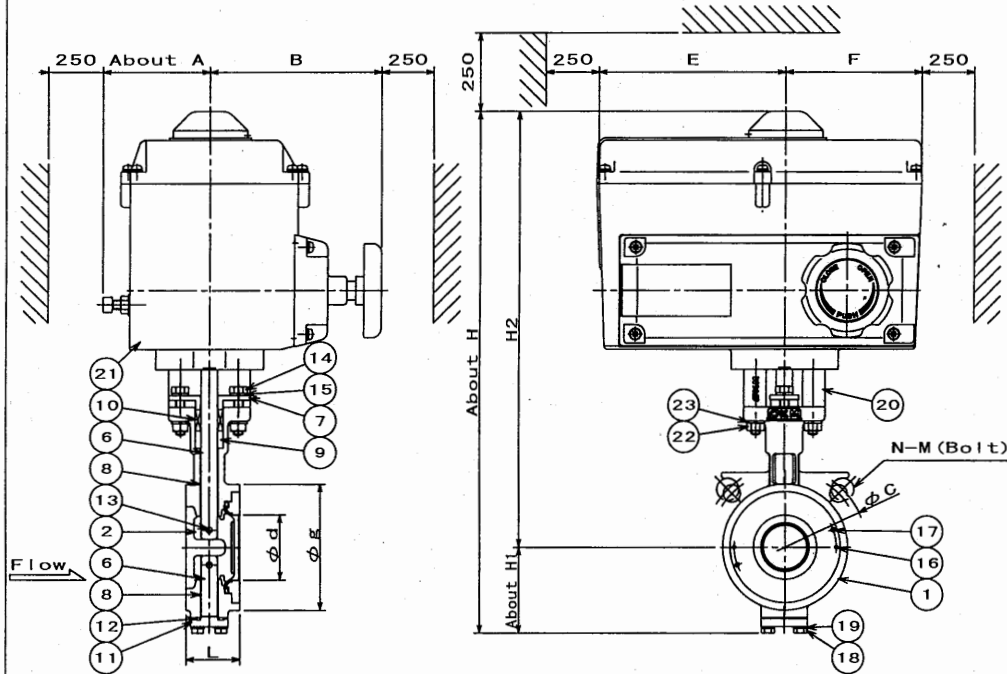
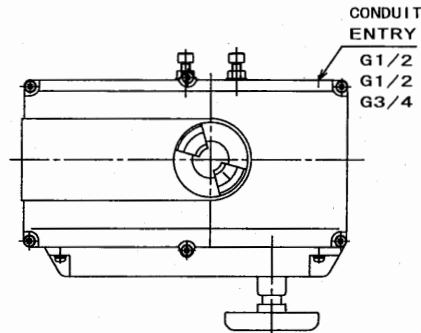


SEAT DETAIL



No.	PARTS NAME	Check MATERIAL	Check MATERIAL	Check MATERIAL	Qty	REMARK
1	BODY	SCS13A	SCS14A	SCS16A	1	
2	DISC	SCS13A (PLATED)	SCS14A (PLATED)	SCS16A (PLATED)	1	
3	SET RING	SCS13A	SCS14A	SCS16A	1	
4	SEAT RING	SUS316 (PLATED)	SUS316 (PLATED)	SUS316L (PLATED)	1	
5	SEAT GASKET	NON-ASBESTOS	NON-ASBESTOS	NON-ASBESTOS	2	
6	STEM	SUS304	SUS316	SUS316L	1set	
7	GLAND	SCS14A	SCS14A	SCS14A	1	
8	BUSH	SUS316+PTFE	SUS316+PTFE	SUS316+PTFE	1set	
9	PACKING WASHER	SUS304	SUS316	SUS316L	1	
10	GLAND PACKING	PTFE	PTFE	PTFE	1set	
11	COVER	SCS13A	SCS14A	SCS16A	1	
12	GASKET	NON-ASBESTOS	NON-ASBESTOS	NON-ASBESTOS	1	
13	TAPER PIN	SUS304	SUS316	SUS316L	1set	
14	GLAND BOLT	SUS304	SUS316	SUS316	2	
15	SPRING WASHER	SUS304	SUS316	SUS316	2	
16	SET PIN	SUS420J2	SUS420J2	SUS420J2	2	
17	DRAW OUT SCREW	SUS304	SUS316	SUS316	2	
18	COVER BOLT	SCM435 (PLATED)	SCM435 (PLATED)	SCM435 (PLATED)	4	
19	SPRING WASHER	SUS304	SUS316	SUS316	4	
20	SPACER YOKE	SCS13A	SCS13A	SCS13A	2	
21	ACTUATOR	-	-	-	1	
22	STUD BOLT, NUT	SUS304	SUS304	SUS304	4	
23	SPRING WASHER	SUS304	SUS304	SUS304	4	

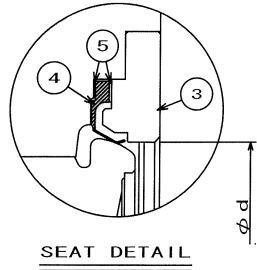
INSTALLATION			
A	B (STANDARD)	C	D
STEM SIDE	STEM SIDE	STEM SIDE	STEM SIDE
SEAT SIDE	SEAT SIDE	SEAT SIDE	SEAT SIDE

Check	SIZE	d	L	g	H	H1	H2	A	B	E	F	ACTUATOR SIZE	WEIGHT (About)
	50mm	42.5	43	94	426	64	362	91	145	160	117	CRV-10A	14.0 Kg
	65mm	56	46	108	446	74	372	91	145	160	117	CRV-10A	14.5 Kg

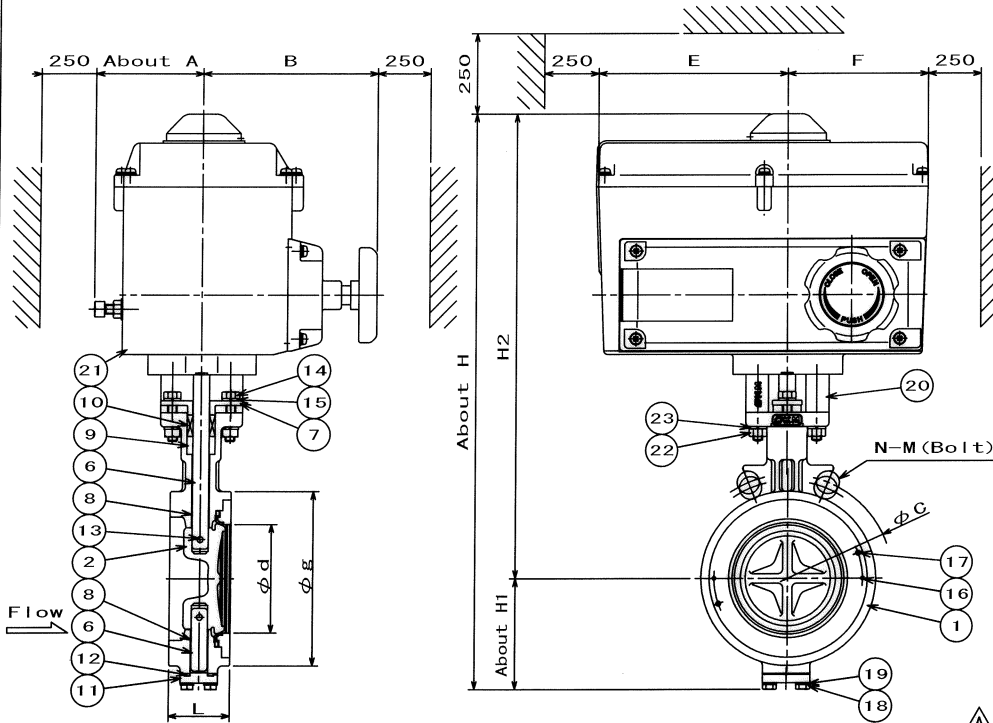
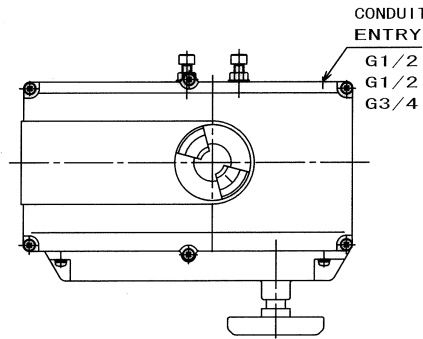
SIZE	JIS5K			JIS10K		
	C	N	M	C	N	M
50mm	105	4	M12	120	4	M16
65mm	130	4	M12	140	4	M16

日付 DATE	Nov. 14, 2007	尺度 SCALE	FREE	製造番号 MFG. No.	
最高使用圧力 MAX WORKING PRESS.	1.0 MPa Pe	使用温度 WORKING TEMP.	-29~232 °C	形式 TYPE	MODEL 541M (K)
耐圧試験 SHELL TEST	1.5 MPa Pe	試験流体 TEST FLUID	WATER	名称 NAME	BUTTERFLY VALVES WITH ELECTRIC ACTUATOR
弁座試験 SEAT TEST	1.1 MPa Pe	許容漏れ LEAKAGE	MSS SP-61		
作成 DRAWN	検討 CHECKED	承認 APPROVED			
	K O I	J. I I	J. I I		
図面番号 DRAWING No.	541M MC 0211 E			Hd-1an975 SYON INST	

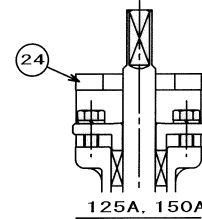
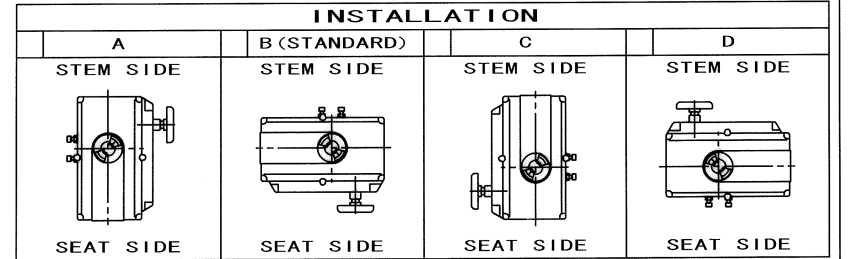
OKM 株式会社オーケーエム
OKUMURA ENGINEERING corp.



SEAT DETAIL



No.	PARTS NAME	Check MATERIAL STANDARD	Check MATERIAL SEMI STANDARD	Check MATERIAL SEMI STANDARD	Q'ty	REMARK
1	BODY	SCS13A	SCS14A	SCS16A	1	
2	DISC	SCS13A (PLATED)	SCS14A (PLATED)	SCS16A (PLATED)	1	
3	SET RING	SCS13A	SCS14A	SCS16A	1	
4	SEAT RING	SUS316 (PLATED)	SUS316 (PLATED)	SUS316L (PLATED)	1	
5	SEAT GASKET	NON-ASBESTOS	NON-ASBESTOS	NON-ASBESTOS	2	
6	STEM	SUS304	SUS316	SUS316L	1set	
7	GLAND	SCS14A	SCS14A	SCS14A	1	
8	BUSH	SUS316+PTFE	SUS316+PTFE	SUS316+PTFE	1set	
9	PACKING WASHER	SUS304	SUS316	SUS316L	1	
10	GLAND PACKING	PTFE	PTFE	PTFE	1set	
11	COVER	SCS13A	SCS14A	SCS16A	1	
12	GASKET	NON-ASBESTOS	NON-ASBESTOS	NON-ASBESTOS	1	
13	TAPER PIN	SUS304	SUS316	SUS316L	1set	
14	GLAND BOLT	SUS304	SUS316	SUS316	2	
15	SPRING WASHER	SUS304	SUS316	SUS316	2	
16	SET PIN	SUS420J2	SUS420J2	SUS420J2	2	
17	DRAW OUT SCREW	SUS304	SUS316	SUS316	2	
18	COVER BOLT	SCM435 (PLATED)	SCM435 (PLATED)	SCM435 (PLATED)	4	
19	SPRING WASHER	SUS304	SUS316	SUS316	4	
20	SPACER YOKE	SCS13A	SCS13A	SCS13A	2	
21	ACTUATOR	-	-	-	1	
22	STUD BOLT, NUT	SUS304	SUS304	SUS304	4	
23	SPRING WASHER	SUS304	SUS304	SUS304	4	
24	SPACER	SS400 (PLATED)	SS400 (PLATED)	SS400 (PLATED)	1	125A, 150A Only

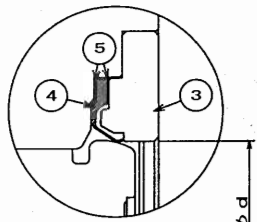


Check	SIZE	d	L	g	H	H1	H2	A	B	E	F	ACTUATOR SIZE	MASS (About)
	80mm	70.0	46	127	466	84	382	91	145	160	117	CRV-10A	15.1kg
	100mm	91.5	52	147	486	94	392	91	145	160	117	CRV-10A	15.9kg
	125mm	119.0	56	180	531	110	421	91	145	160	117	CRV-20A	19.2kg
	150mm	143.5	56	209	560	124	436	91	145	160	117	CRV-20A	20.5kg

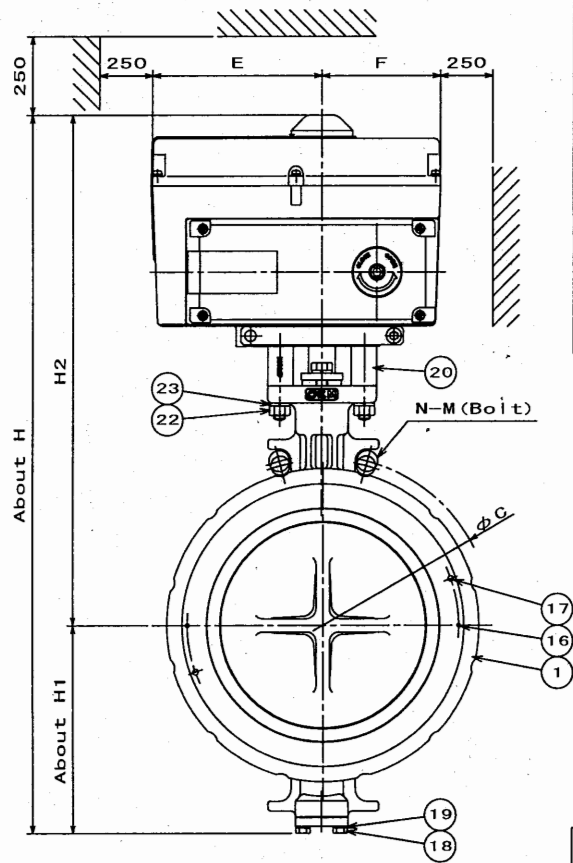
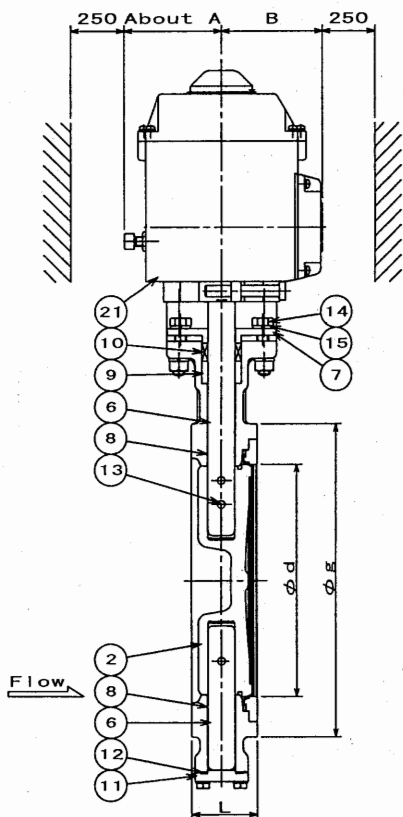
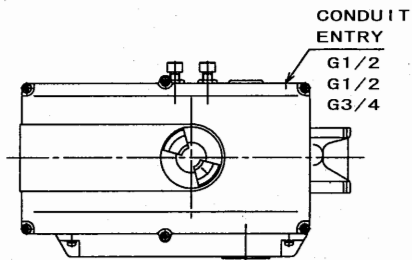
SIZE	JIS5K			JIS10K		
	C	N	M	C	N	M
80mm	145	4	M16	150	8	M16
100mm	165	8	M16	175	8	M16
125mm	200	8	M16	210	8	M20
150mm	230	8	M16	240	8	M20

日付 DATE	Nov. 14, 2007	尺度 SCALE	FREE	製造番号 MFG. No.	
最高使用圧力 MAX. WORKING PRESS.	1.0 MPa Pe	使用温度 WORKING TEMP.	-29~232 °C	形式 TYPE	MODEL 541M (K)
耐圧試験 SHELL TEST	1.5 MPa Pe	試験流体 TEST FLUID	WATER	名称 NAME	BUTTERFLY VALVES WITH ELECTRIC ACTUATOR
弁座試験 SEAT TEST	1.1 MPa Pe	許容漏れ LEAKAGE	MSS SP-61		
作成 DRAWN	検計 CHECKED	承認 APPROVED			
			図面番号 DRAWING No. 541M MC 0212 EA		
			Hd-1an975 SYONINST		

NOV. 14, 2008



SEAT DETAIL



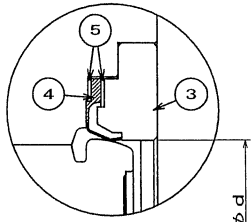
No.	PARTS NAME	Check	MATERIAL	Check	MATERIAL	Check	MATERIAL	Q'ty	REMARK
			STANDARD		SEMI STANDARD		SEMI STANDARD		
1	BODY		SCS13A		SCS14A		SCS16A	1	
2	DISC		SCS13A (PLATED)		SCS14A (PLATED)		SCS16A (PLATED)	1	
3	SET RING		SCS13A		SCS14A		SCS16A	1	
4	SEAT RING		SUS316 (PLATED)		SUS316 (PLATED)		SUS316L (PLATED)	1	
5	SEAT GASKET		NON-ASBESTOS		NON-ASBESTOS		NON-ASBESTOS	2	
6	STEM		SUS304		SUS316		SUS316L	1set	
7	GLAND		SCS14A		SCS14A		SCS14A	1	
8	BUSH		SUS316+PTFE		SUS316+PTFE		SUS316+PTFE	1set	
9	PACKING WASHER		SUS304		SUS316		SUS316L	1	
10	GLAND PACKING		PTFE		PTFE		PTFE	1set	
11	COVER		SCS13A		SCS14A		SCS16A	1	
12	GASKET		NON-ASBESTOS		NON-ASBESTOS		NON-ASBESTOS	1	
13	TAPER PIN		SUS304		SUS316		SUS316L	1set	
14	GLAND BOLT		SUS304		SUS316		SUS316	2	
15	SPRING WASHER		SUS304		SUS316		SUS316	2	
16	SET PIN		SUS420J2		SUS420J2		SUS420J2	2	
17	DRAW OUT SCREW		SUS304		SUS316		SUS316	2	
18	COVER BOLT		SCM435 (PLATED)		SCM435 (PLATED)		SCM435 (PLATED)	4	
19	SPRING WASHER		SUS304		SUS316		SUS316	4	
20	SPACER YOKE		SCS13A		SCS13A		SCS13A	2	
21	ACTUATOR		-		-		-	1	
22	STUD BOLT, NUT		SUS304		SUS304		SUS304	4	
23	SPRING WASHER		SUS304		SUS304		SUS304	4	

INSTALLATION			
A	B (STANDARD)	C	D
STEM SIDE	STEM SIDE	STEM SIDE	STEM SIDE
SEAT SIDE	SEAT SIDE	SEAT SIDE	SEAT SIDE

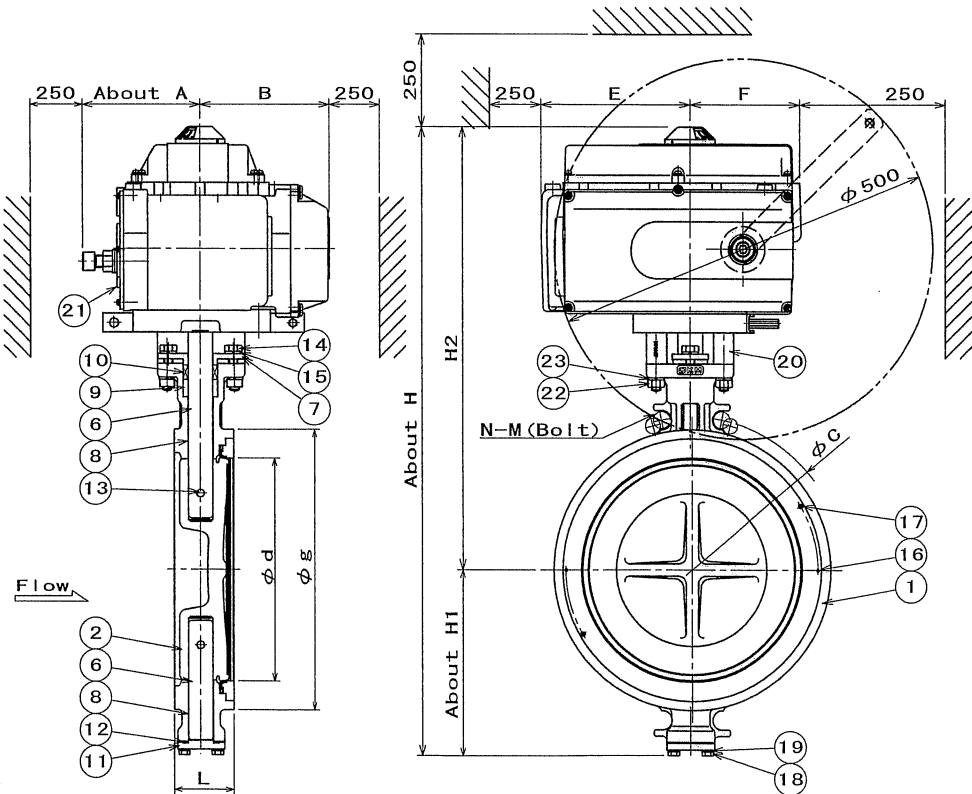
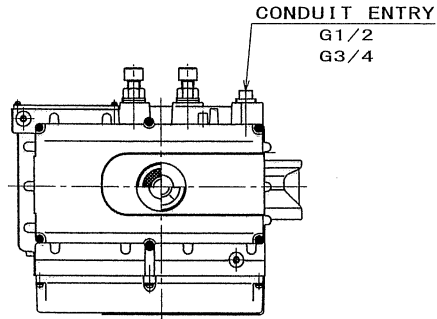
Check	SIZE	d	L	g	H	H1	H2	A	B	E	F	ACTUATOR SIZE	WEIGHT (About)
	200mm	192.5	60	265	666	183	483	100	105	177	124	CRV-40A	29.2Kg
	250mm	242.5	68	327	750	218	532	100	105	177	124	CRV-60A	31.6Kg

SIZE	JIS5K			JIS10K		
	C	N	M	C	N	M
200mm	280	8	M20	290	12	M20
250mm	345	12	M20	355	12	M22

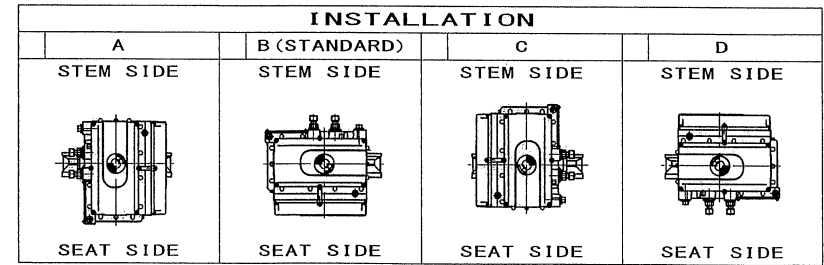
日付 DATE	Nov. 14. 2007	尺度 SCALE	FREE	製造番号 MFG. No.	
最高使用圧力 MAX WORKING PRESS.	1.0 MPa Pa	使用温度 WORKING TEMP.	-29~232 °C	形式 TYPE	MODEL 541M (K)
耐圧試験 SHELL TEST	1.5 MPa Pa	試験流体 TEST FLUID	WATER	名称 NAME	BUTTERFLY VALVES WITH ELECTRIC ACTUATOR
弁座試験 SEAT TEST	1.1 MPa Pa	許容漏れ LEAKAGE	MSS SP-61		
作成 DRAWN	検査 CHECKED	承認 APPROVED		株式会社オーケーエム OKUMURA ENGINEERING corp.	
	K o i	J. M I	J. S. I.	図面番号 DRAWING No.	541M MC 0213 E
					Hd-1an975 SYONINST



SEAT DETAIL



No.	PARTS NAME	Check	MATERIAL	Check	MATERIAL	Check	MATERIAL	Q'ty	REMARK
			STANDARD		SEMI STANDARD		SEMI STANDARD		
1	BODY		SCS13A		SCS14A		SCS16A	1	
2	DISC		SCS13A (PLATED)		SCS14A (PLATED)		SCS16A (PLATED)	1	
3	SET RING		SCS13A		SCS14A		SCS16A	1	
4	SEAT RING		SUS316 (PLATED)		SUS316 (PLATED)		SUS316L (PLATED)	1	
5	SEAT GASKET		NON-ASBESTOS		NON-ASBESTOS		NON-ASBESTOS	2	
6	STEM		SUS304		SUS316		SUS316L	1set	
7	GLAND		SCS14A		SCS14A		SCS14A	1	
8	BUSH		SUS316+PTFE		SUS316+PTFE		SUS316+PTFE	1set	
9	PACKING WASHER		SUS304		SUS316		SUS316L	1	
10	GLAND PACKING		PTFE		PTFE		PTFE	1set	
11	COVER		SCS13A		SCS14A		SCS16A	1	
12	GASKET		NON-ASBESTOS		NON-ASBESTOS		NON-ASBESTOS	1	
13	TAPER PIN		SUS304		SUS316		SUS316L	1set	
14	GLAND BOLT		SUS304		SUS316		SUS316	2	
15	SPRING WASHER		SUS304		SUS316		SUS316	2	
16	SET PIN		SUS420J2		SUS420J2		SUS420J2	2	
17	DRAW OUT SCREW		SUS304		SUS316		SUS316	2	
18	COVER BOLT		SCM435 (PLATED)		SCM435 (PLATED)		SCM435 (PLATED)	4	
19	SPRING WASHER		SUS304		SUS316		SUS316	4	
20	SPACER YOKE		SCS13A		SCS13A		SCS13A	2	
21	ACTUATOR		-		-		-	1	
22	STUD BOLT, NUT		SUS304		SUS304		SUS304	4	
23	SPRING WASHER		SUS304		SUS304		SUS304	4	



SIZE	d	L	g	H	H1	H2	A	B	E	F	ACTUATOR SIZE (About)	MASS (About)
300A	291.5	78	367	825	243	582	157	168	198	146	CRV-100A	47.2kg

SIZE	JIS5K			JIS10K		
	C	N	M	C	N	M
300A	390	12	M20	400	16	M22

日付 DATE	JUN. 04, 2014	尺度 SCALE	FREE	製造番号 MFG. No.	
最高使用圧力 MAX. WORKING PRESS.	1.0 MPa Pe	使用温度 WORKING TEMP.	-20~232 °C	形式 TYPE	MODEL 541M (K)
耐圧試験 SHELL TEST	1.5 MPa Pe	試験流体 TEST FLUID	WATER	名称 NAME	BUTTERFLY VALVE WITH ELECTRIC ACTUATOR
弁座試験 SEAT TEST	1.1 MPa Pe	許容漏れ LEAKAGE	MSS SP-61		
作成 DRAWN	検討 CHECKED	承認 APPROVED		図面番号 DRAWING No.	541M MC 0453 E
					HD SYONINST

OKM 株式会社 オーケーエム
OKUMURA ENGINEERING corp.