

SIZE	d	L1	L2	g	H	H1	H2	H3	A1	A2	CYLINDER SIZE	MASS (About)
40A	43	33	35.3	69	296	66	132	98	166	13	TA3M-X050D	2.5kg
50A	55	43	46	81	307	69	140	98	166	13	TA3M-X050D	2.7kg
65A	66	46	49	104	328	80	150	98	166	13	TA3M-X050D	3.3kg

SIZE	JIS5K			JIS10K		
	C	N	h	C	N	h
40A	95	2/4	14	105	2/4	18
50A	105	2/4	14	120	2/4	18
65A	130	2/4	14	140	2/4	18

VIEW OF B

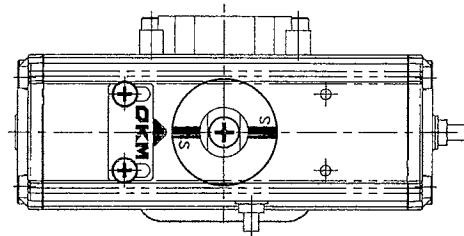
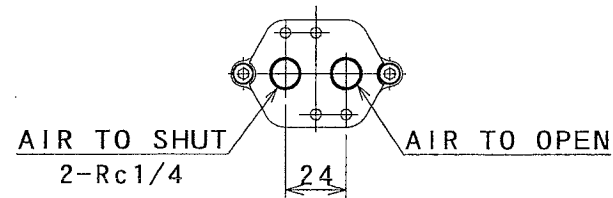
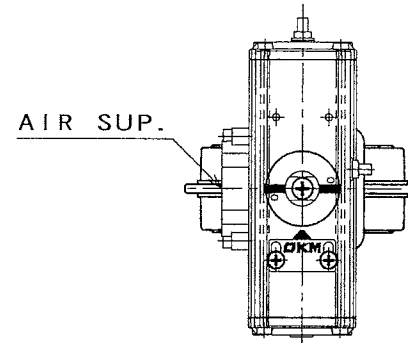
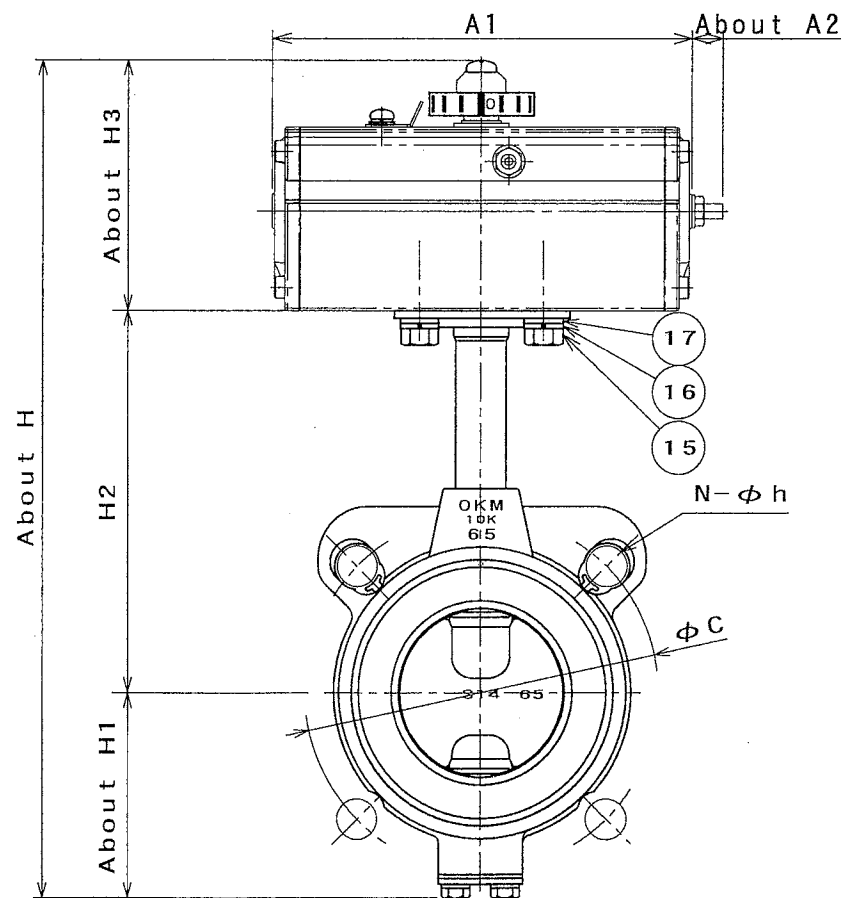
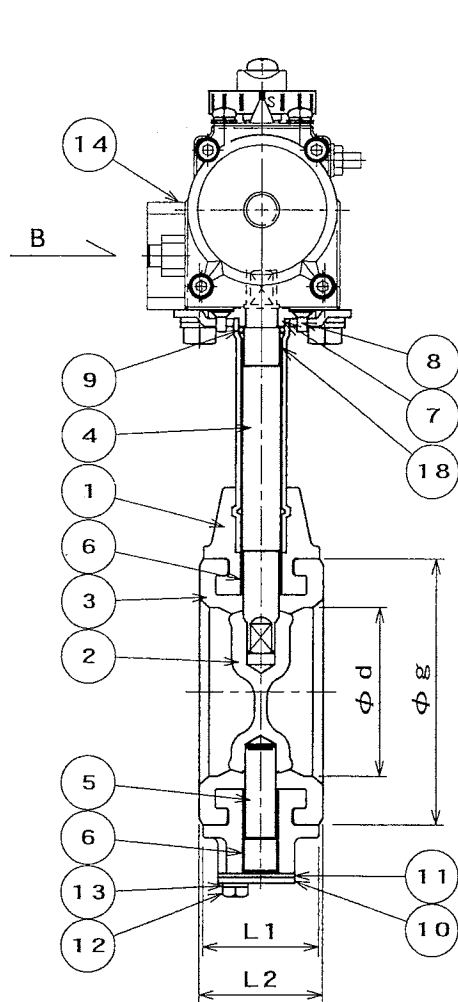
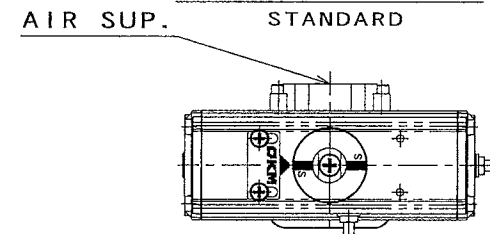


Table 1		INSTALLATION
EPDM*1		INSTALLATION A
NBR *2		INSTALLATION B

INSTALLATION OF A



INSTALLATION OF B STANDARD



製番 MFG. NO.		名称及形式 MODEL 602A (40A~65A) BUTTERFLY VALVES WITH PNEUMATIC CYLINDER		
番号 NO.	部品名称 PARTS NAME	材質 MATERIAL	数量 Q. ty	備考 REMARKS
1	BODY	ADC12	1	
2	DISC	SGS14	1	
3	SEAT RING	See Table 1	1	
4	UPPER STEM	SUS420J2	1	
5	LOWER STEM	SUS420J2	1	
6	BUSH	PLASTIC	1set	
7	NECK BUSH	PLASTIC	1	
8	SCREW	SUS304	4	
9	O-RING	NBR	1	
10	COVER	SPCC	1	PLATED
11	GASKET	NBR	1	
12	COVER BOLT	SUS304	2	
13	SPRING WASHER	SUS304	2	
14	CYLINDER		1	
15	BOLT	SUS304	4	
16	SPRING WASHER	SUS304	4	
17	WASHER	SUS304	4	
18	O-RING BUSH	PLASTIC	1	
19				
20				
21				
22				
23				
24				
25				
日付 DATE	FEB. 22, 2010	尺度 SCALE	FREE	
使用圧力 WORKING PRESSURE	Max 1.0 MPa	使用温度 WORKING TEMP. #1	-20~120 °C	
耐圧試験 SHELL TEST	1.5 MPa	試験流体 TEST FLUID	WATER	
弁座試験 SEAT TEST	1.1 MPa	許容漏れ LEAKAGE	0 %	
作成 DRAWN	検討 CHECKED	承認 APPROVED		
S.Y		7-1		APL
OKM		株式会社 オーケーエム OKUMURA ENGINEERING corp.		
図面番号 DRAWING NO.	602A CA 0355 E		FLOP. No.	
			Hd-1an975	

SIZE	d	L1	L2	g	H	H1	H2	H3	A1	A2	CYLINDER SIZE	MASS (About)
80A	84	46	49	115	342	89	155	98	166	13	TA3M-X050D	3.4kg

SIZE	JIS5K			JIS10K		
	C	N	h	C	N	h
80A	145	2/4	18	150	2/8	18

VIEW OF B

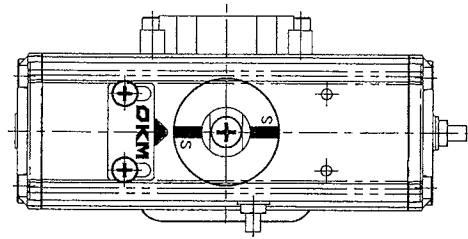
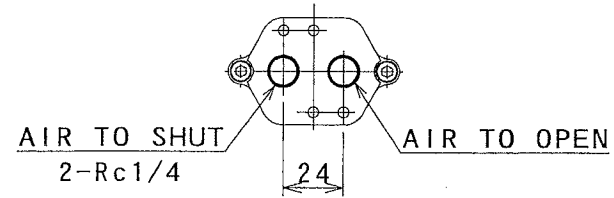
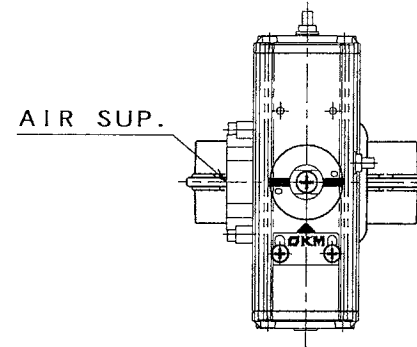
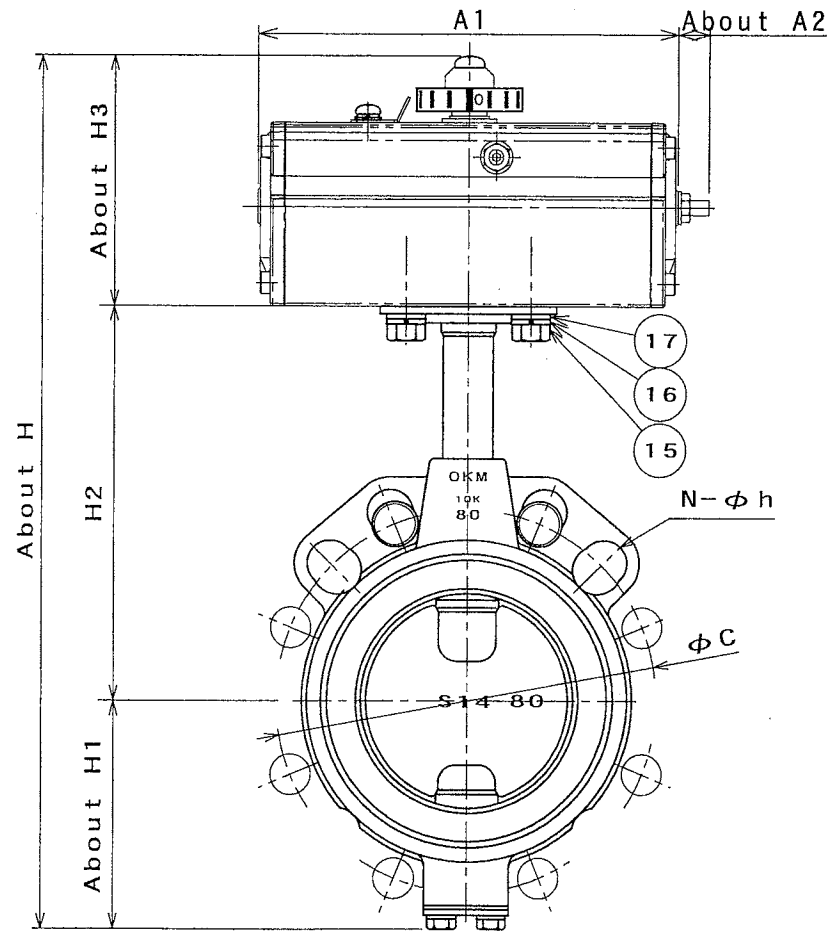
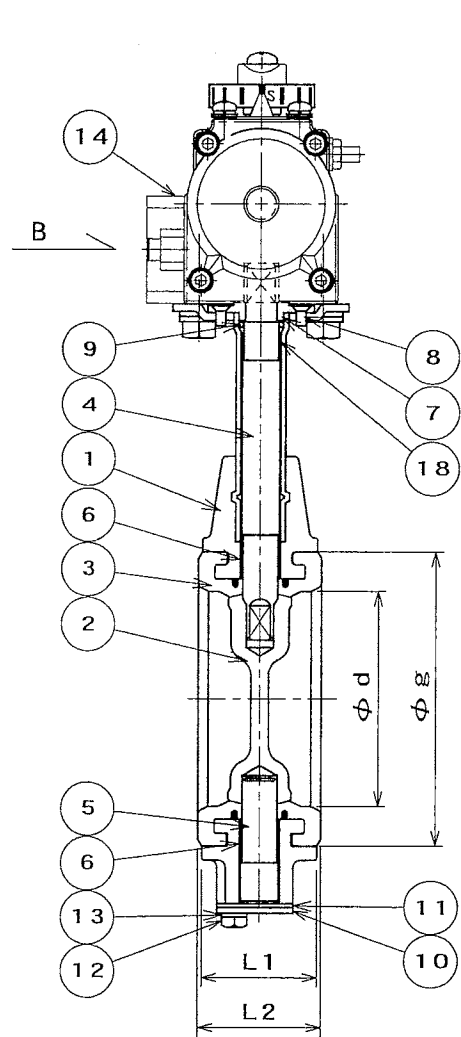
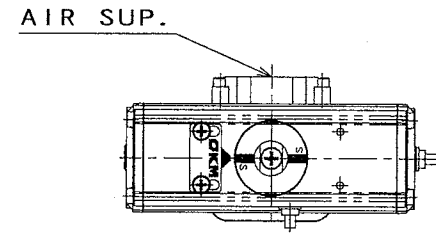


Table 1		INSTALLATION
EPDM*1		INSTALLATION A
NBR *2		INSTALLATION B

INSTALLATION OF A



INSTALLATION OF B STANDARD



製番 MFG. NO.		名称及形式 MODEL 602A (80A) NAME AND TYPE BUTTERFLY VALVE WITH PNEUMATIC CYLINDER		
番号 NO.	部品名称 PARTS NAME	材質 MATERIAL	数量 Q. ty	備考 REMARKS
1	BODY	ADC12	1	
2	DISC	SCS14	1	
3	SEAT RING	See Table 1	1	
4	UPPER STEM	SUS420J2	1	
5	LOWER STEM	SUS420J2	1	
6	BUSH	PLASTIC	1set	
7	NECK BUSH	PLASTIC	1	
8	SCREW	SUS304	4	
9	O-RING	NBR	1	
10	COVER	SPCC	1	PLATED
11	GASKET	NBR	1	
12	COVER BOLT	SUS304	2	
13	SPRING WASHER	SUS304	2	
14	CYLINDER		1	
15	BOLT	SUS304	4	
16	SPRING WASHER	SUS304	4	
17	WASHER	SUS304	4	
18	O-RING BUSH	PLASTIC	1	
19				
20				
21				
22				
23				
24				
25				

日付 DATE	FEB. 22, 2010	尺度 SCALE	FREE
使用压力 WORKING PRESSURE	Max 1.0 MPa	使用温度 #1: -20~120 °C	WORKING TEMP. #2: -10~70 °C
耐压試験 SHELL TEST	1.5 MPa	試験流体 TEST FLUID	WATER
弁座試験 SEAT TEST	1.1 MPa	許容漏れ LEAKAGE	0 %

作成 DRAWN	検討 CHECKED	承認 APPROVED
S.Y	7.1	[Signature]

OKM 株式会社 オーケーエム OKUMURA ENGINEERING corp.

図面番号 DRAWING NO.	602A CA 0356 E	FLOP.No. Hd-lan975
------------------	----------------	--------------------

SIZE	d	L1	L2	g	H	H1	H2	H3	A1	A2	CYLINDER SIZE	MASS (About)
100A	100	52	55	136	371	106	167	98	166	13	TA3M-X050D	4.1kg
125A	130	56	59	167	453	123	187	143	253	18	TA3M-X080D	8.3kg
150A	154	56	59	196	483	138	202	143	253	18	TA3M-X080D	9.3kg

SIZE	JIS5K			JIS10K		
	C	N	h	C	N	h
100A	165	2/8	18	175	2/8	18
125A	200	2/8	18	210	2/8	22
150A	230	2/8	18	240	2/8	22

VIEW OF B

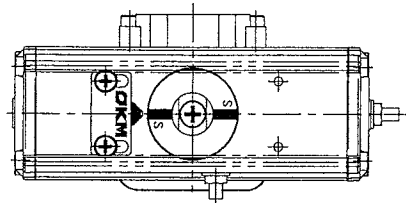
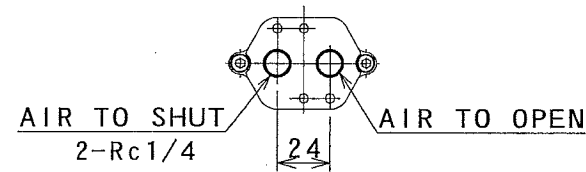
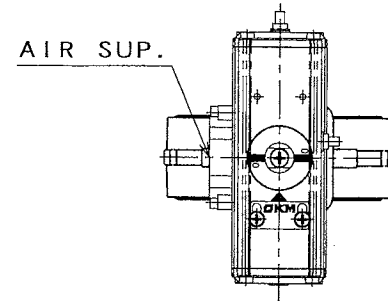
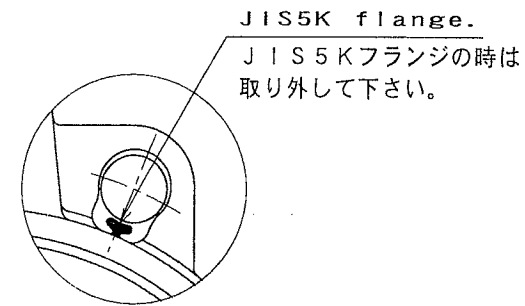
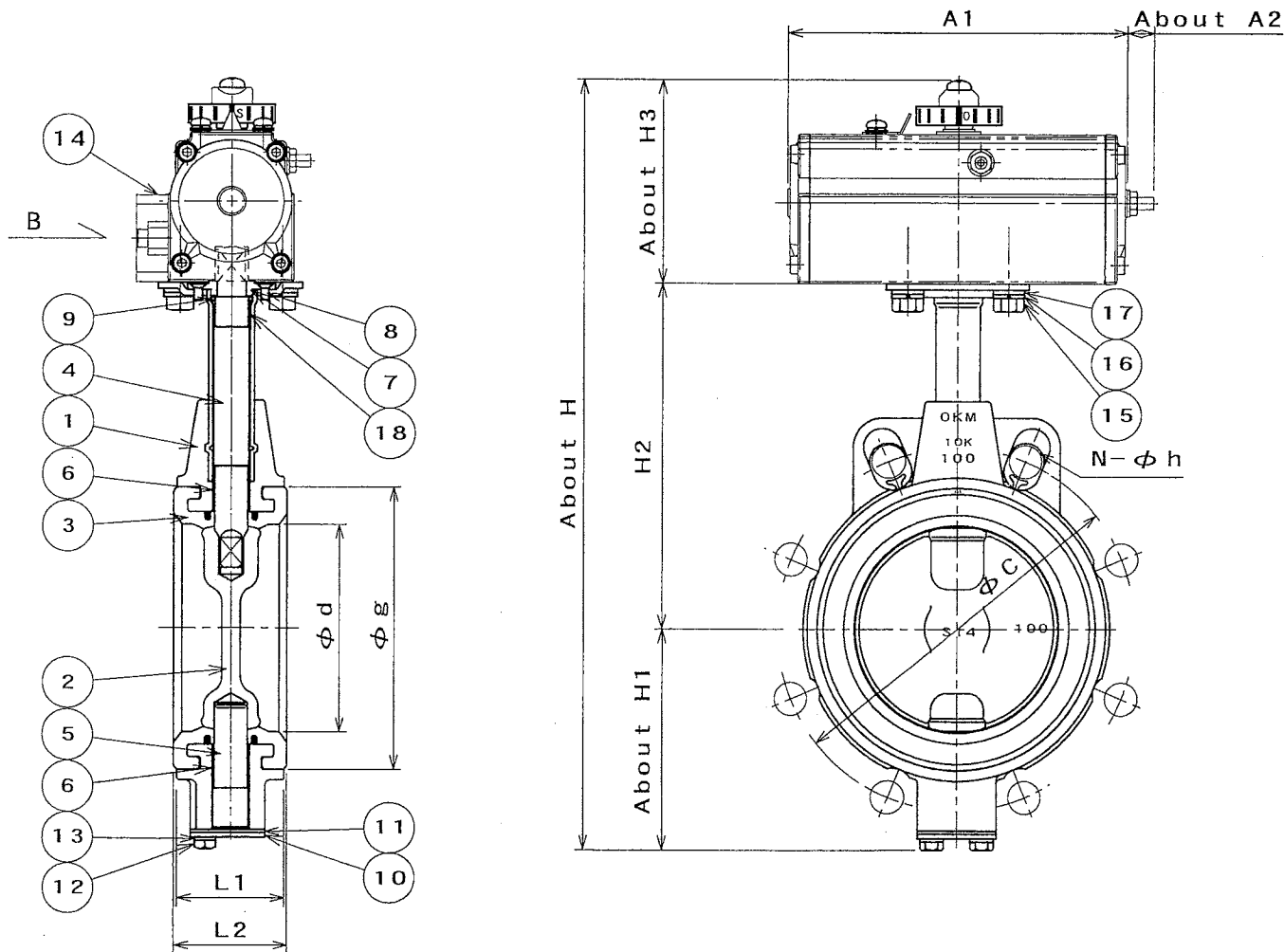
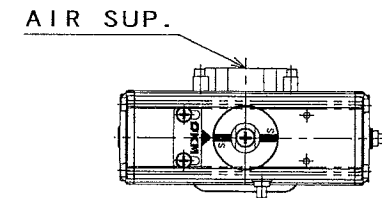


Table 1		INSTALLATION
EPDM*1		INSTALLATION A
NBR *2		INSTALLATION B

INSTALLATION OF A



INSTALLATION OF B STANDARD



製番 MFG. NO.	MODEL 602A (100A~150A) BUTTERFLY VALVES WITH PNEUMATIC CYLINDER			
番号 NO.	部品名称 PARTS NAME	材質 MATERIAL	数量 Q. ty	備考 REMARKS
1	BODY	ADC12	1	
2	DISC	SCS14	1	
3	SEAT RING	See Table 1	1	
4	UPPER STEM	SUS420J2	1	
5	LOWER STEM	SUS420J2	1	
6	BUSH	PLASTIC	1set	
7	NECK BUSH	PLASTIC	1	
8	SCREW	SUS304	4	
9	O-RING	NBR	1	
10	COVER	SPCC	1	PLATED
11	GASKET	NBR	1	
12	COVER BOLT	SUS304	2	
13	SPRING WASHER	SUS304	2	
14	CYLINDER		1	
15	BOLT	SUS304	4	
16	SPRING WASHER	SUS304	4	
17	WASHER	SUS304	4	
18	O-RING BUSH	PLASTIC	1	
19				
20				
21				
22				
23				
24				
25				
日付 DATE	FEB. 22, 2010	尺度 SCALE	FREE	
使用圧力 WORKING PRESSURE	Max 1.0 MPa Pe	使用温度 WORKING TEMP.	*1:-20~120℃ *2:-10~70	
耐圧試験 SHELL TEST	1.5 MPa Pe	試験流体 TEST FLUID	WATER	
弁座試験 SEAT TEST	1.1 MPa Pe	許容漏れ LEAKAGE	0 %	
作成 DRAWN	検討 CHECKED	承認 APPROVED		
S.Y		7.11		[Signature]
OKM		株式会社オーケーエム OKUMURA ENGINEERING corp.		
図面番号 DRAWING NO.	602A CA 0357 E		FLOP. No. Hd-1an975	

SIZE	d	L1	L2	g	H	H1	H2	H3	A1	A2	CYLINDER SIZE	MASS (About)
200A	200	60	63	242	569	168	230	171	330	25	TA3M-X100D	16.2kg

SIZE	JIS5K			JIS10K		
	C	N	h	C	N	h
200A	280	2/8	22	290	2/12	22

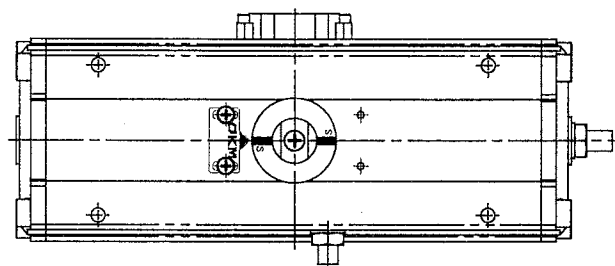
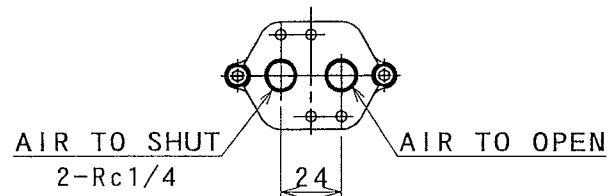
Table 1	INSTALLATION
EPDM*1	INSTALLATION A
NBR *2	INSTALLATION B

製番 MFG. NO.

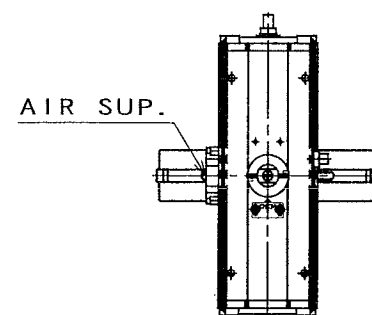
名称及形式 MODEL 602A (200A)
NAME AND TYPE BUTTERFLY VALVE WITH PNEUMATIC CYLINDER

番号 NO.	部品名称 PARTS NAME	材質 MATERIAL	数量 Q. ty	備考 REMARKS
1	BODY	ADC12	1	
2	DISC	SCS14	1	
3	SEAT RING	See Table 1	1	
4	UPPER STEM	SUS420J2	1	
5	LOWER STEM	SUS420J2	1	
6	BUSH	PLASTIC	1set	
7	NECK BUSH	PLASTIC	1	
8	SCREW	SUS304	4	
9	O-RING	NBR	1	
10	COVER	SPCC	1	PLATED
11	GASKET	NBR	1	
12	COVER BOLT	SUS304	2	
13	SPRING WASHER	SUS304	2	
14	CYLINDER		1	
15	BOLT	SUS304	4	
16	SPRING WASHER	SUS304	4	
17	WASHER	SUS304	4	
18	O-RING BUSH	PLASTIC	1	
19				
20				
21				
22				
23				
24				
25				

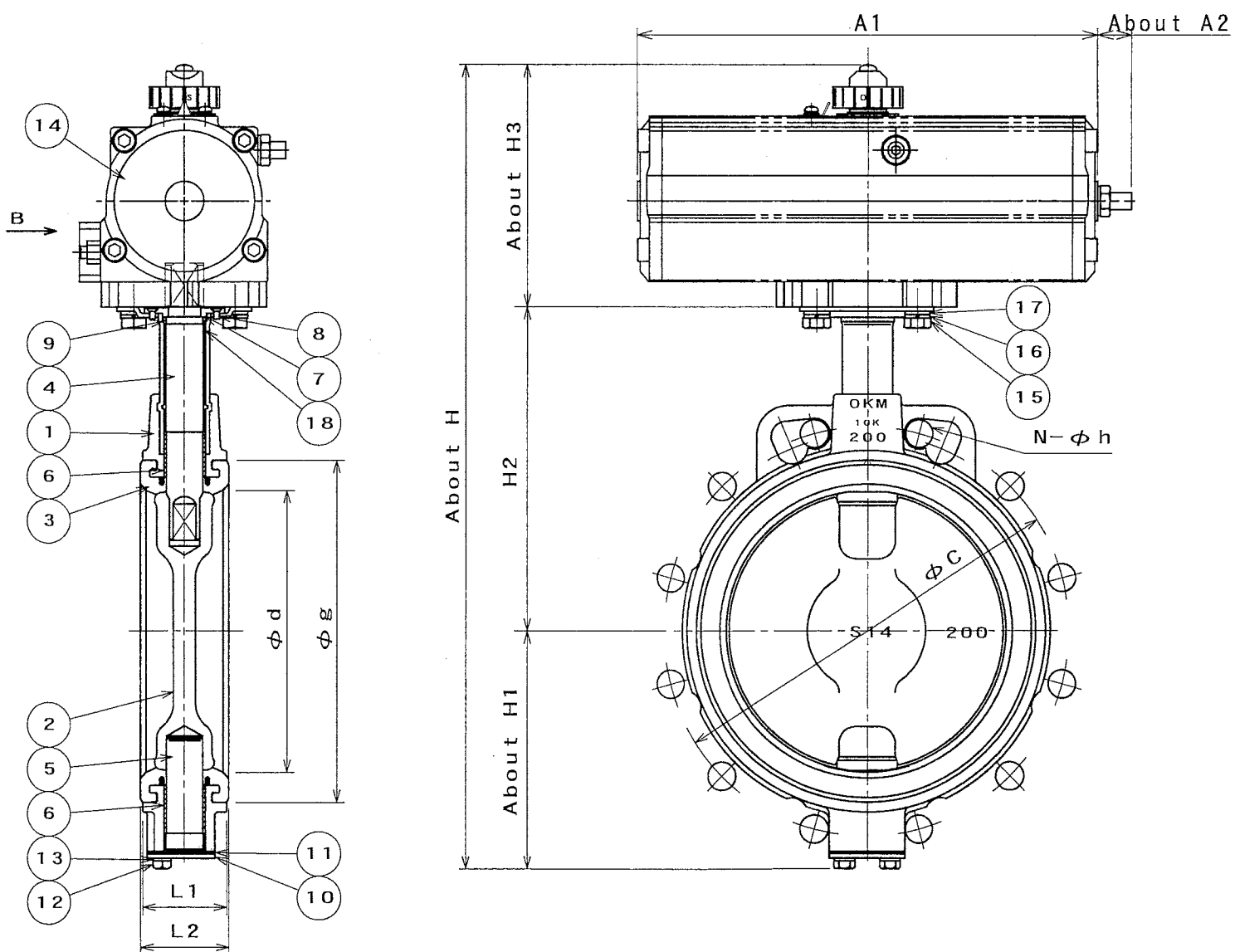
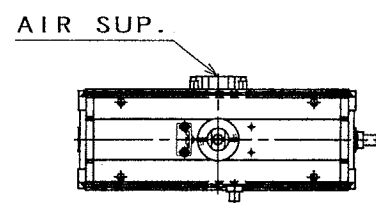
VIEW OF B



INSTALLATION OF A



INSTALLATION OF B STANDARD



日付 DATE	FEB. 22, 2010	尺度 SCALE	FREE
使用圧力 WORKING PRESSURE	Max 1.0 MPa	使用温度 WORKING TEMP. #1:	-20~120 °C
耐圧試験 SHELL TEST	1.5 MPa	試験流体 TEST FLUID	WATER
弁座試験 SEAT TEST	1.1 MPa	許容漏れ LEAKAGE	0 %

作成 DRAWN: S.Y.
検討 CHECKED: [Signature]
承認 APPROVED: [Signature]

OKM 株式会社 オーケーエム
OKUMURA ENGINEERING corp.

図面番号 DRAWING NO. 602A CA 0358 E
FLOP. No. Hd-1an975

SIZE	d	L1	L2	g	H	H1	H2	H3	A1	A2	CYLINDER SIZE	MASS (About)
250A	246	68	71	300	706	223	280	203	416	29	TA3M-X125D-F10	30kg
300A	295	78	81	346	773	260	310	203	416	29	TA3M-X125D-F12	37kg

SIZE	JIS5K			JIS10K		
	C	N	h	C	N	h
250A	345	2/12	23	355	2/12	25
300A	390	2/12	23	400	2/16	25

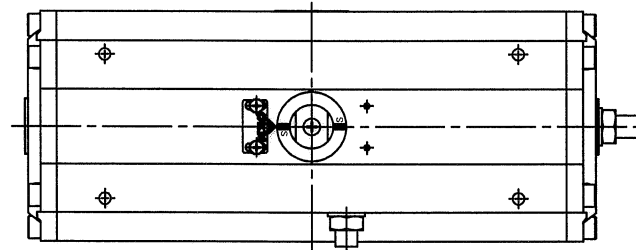
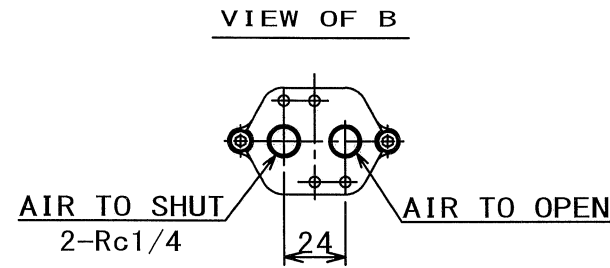
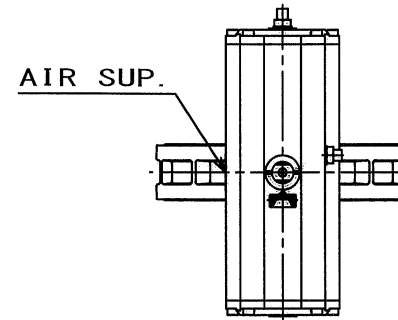
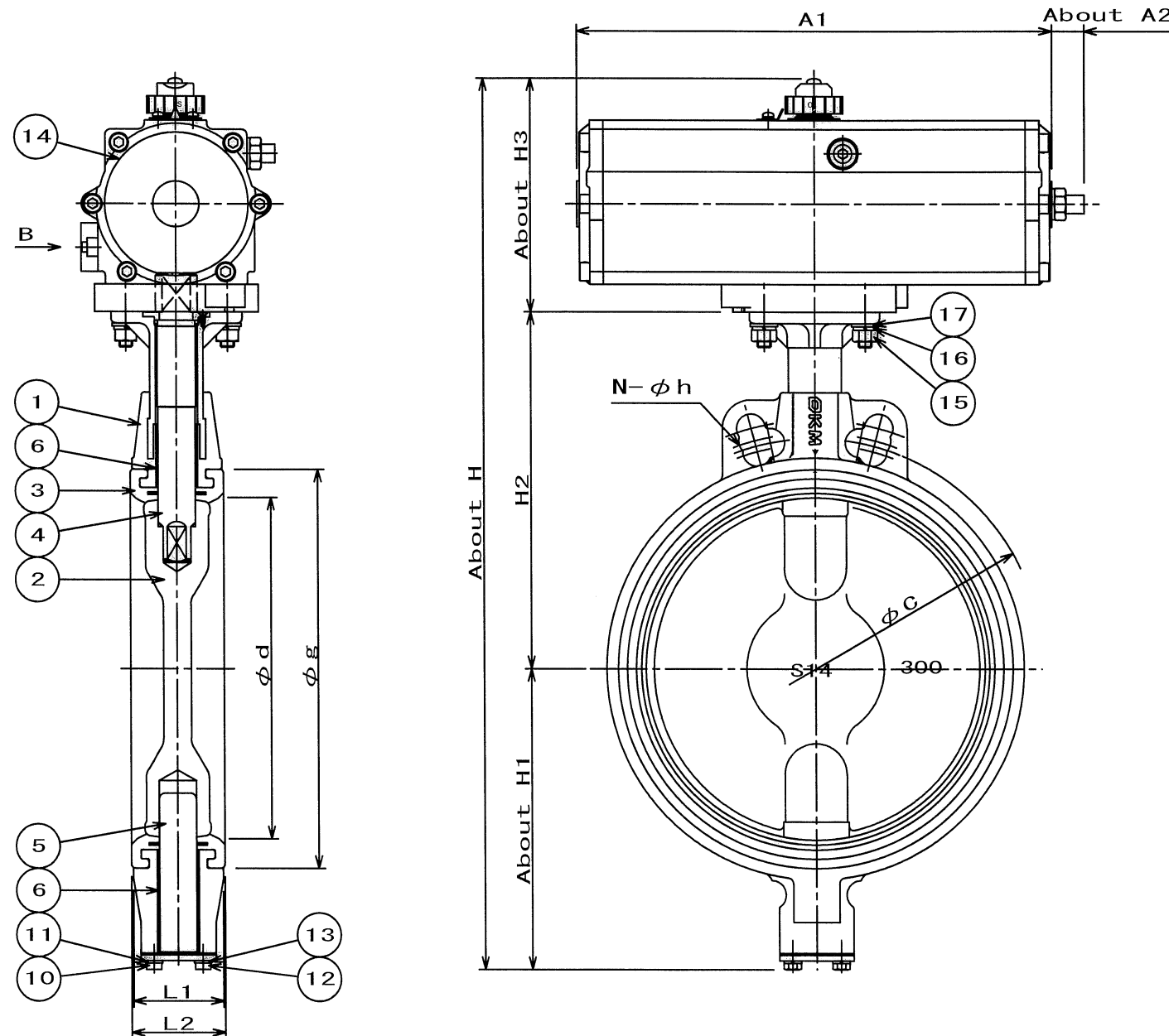
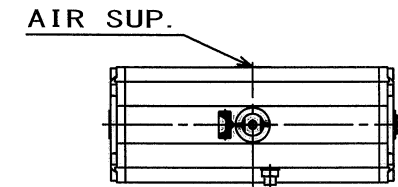


Table 1	INSTALLATION
EPDM*1	INSTALLATION A
NBR *2	INSTALLATION B

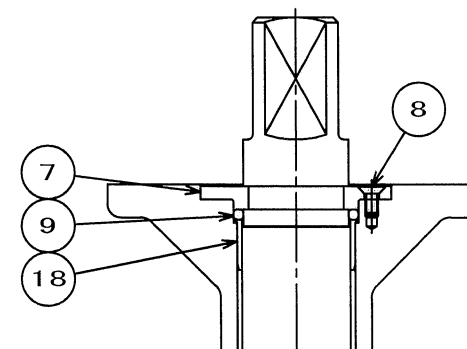
INSTALLATION OF A



INSTALLATION OF B (STANDARD)



NECK DETAIL



番号 NO.	部品名称 PARTS NAME	材質 MATERIAL	数量 Q. ty	備考 REMARKS
1	BODY	ADC12	1	
2	DISC	SCS14	1	
3	SEAT RING	See Table 1	1	
4	UPPER STEM	SUS420J2	1	
5	LOWER STEM	SUS420J2	1	
6	BUSH	PLASTIC	1set	
7	NECK BUSH	PLASTIC	1	
8	SCREW	SUS304	4	
9	O-RING	NBR	1	
10	COVER	SS400	1	PLATED
11	GASKET	NBR	1	
12	COVER BOLT	SUS304	4	
13	SPRING WASHER	SUS304	4	
14	CYLINDER		1	
15	STUD BOLT, NUT	SUS304	4	
16	SPRING WASHER	SUS304	4	
17	WASHER	SUS304	4	
18	O-RING BUSH	PLASTIC	1	
19				
20				
21				
22				
23				
24				
25				

製番 MFG. NO. MODEL 602A (250A, 300A)
 名称及形式 NAME AND TYPE BUTTERFLY VALVES WITH PNEUMATIC CYLINDER

日付 DATE Aug. 18. 2011 尺度 SCALE FREE

使用压力 WORKING PRESSURE Max 1.0 MPa_{Pe} 使用温度 WORKING TEMP. *1:-20~120℃ *2:-10~70℃

耐压試験 SHELL TEST 1.5 MPa_{Pe} 試験流体 TEST FLUID WATER

弁座試験 SEAT TEST 1.1 MPa_{Pe} 許容漏れ LEAKAGE 0%

作成 DRAWN K. O. I. 検討 CHECKED 承認 APPROVED

OKM 株式会社 オークエム OKUMURA ENGINEERING corp.

図面番号 DRAWING NO. 602A CA 0424 E FLOP. No. Hd-Ian975