

SIZE	d	L1	L2	g	H	H1	H2	H3	A	B	W	GEAR SIZE	MASS (About)
50A	55	43	46	81	257.5	85.5	145	27	132	35	100	4K	4.8Kg
65A	66	46	49	99	266.5	84.5	155	27	132	35	100	4K	5.5Kg

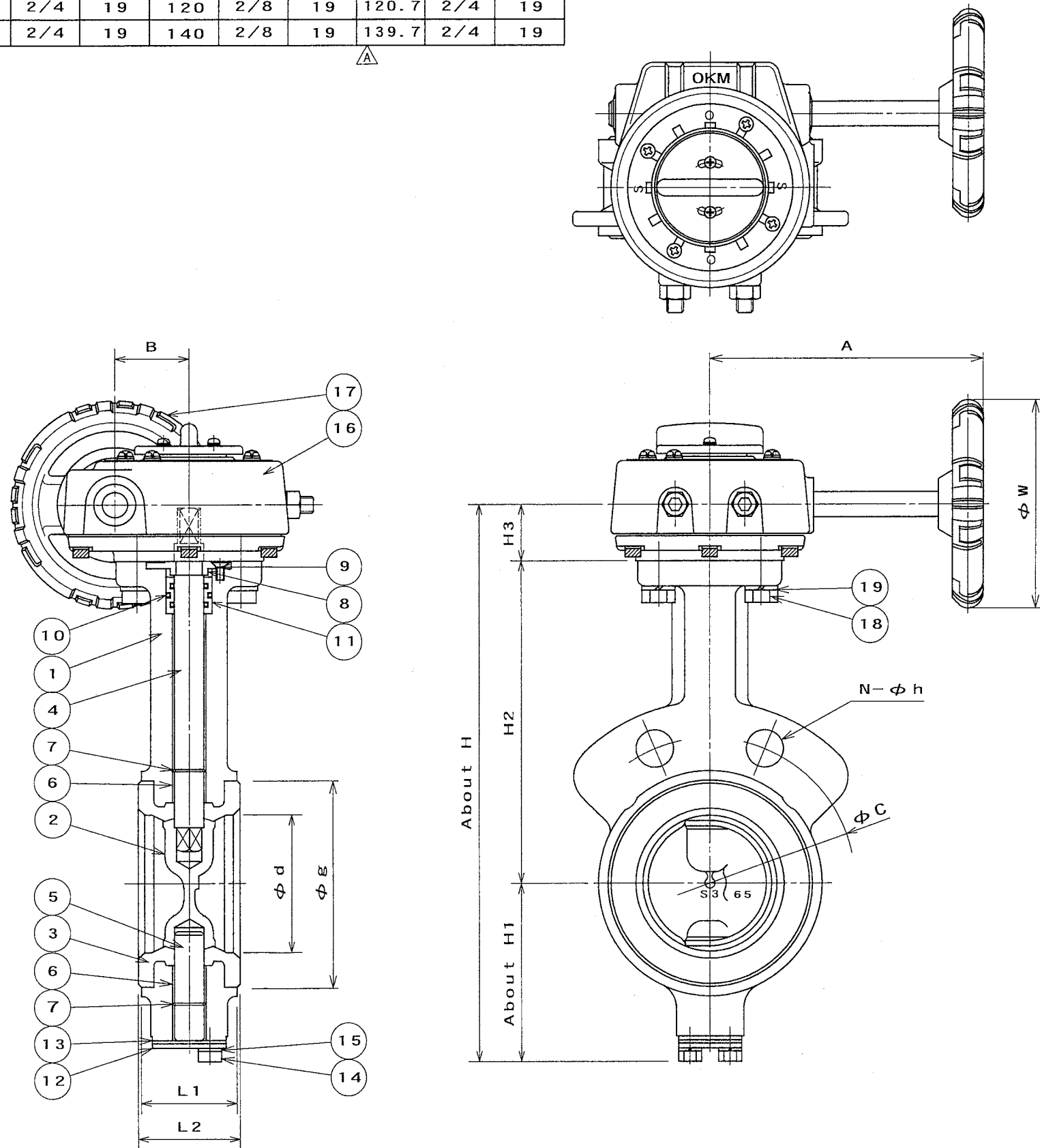
SIZE	JIS10K			JIS16K/20K			ASME125Lb/150Lb		
	C	N	h	C	N	h	C	N	h
50A	120	2/4	19	120	2/8	19	120.7	2/4	19
65A	140	2/4	19	140	2/8	19	139.7	2/4	19

Table 1	Table 2
SCS13	NBR *1
SCS14	EPDM*2

製番 MFG. NO. _____

名称及形式 MODEL 618H (50A, 65A)
NAME AND TYPE BUTTERFLY VALVES WITH WORM GEAR OPERATOR

番号 NO.	部品名称 PARTS NAME	材質 MATERIAL	数量 Q. ty	備考 REMARKS
1	BODY	FCD450	1	
2	DISC	See Table 1	1	
3	SEAT RING	See Table 2	1	LINING
4	UPPER STEM	SUS420J2	1	
5	LOWER STEM	SUS420J2	1	
6	BUSH	PLASTIC	1set	
7	RING	SUS304	1set	
8	NECK BUSH	PLASTIC	1	
9	SCREW	SUS304	4	
10	O-RING	NBR	1set	
11	SEAL RING	PLASTIC	1	
12	COVER	SPCC	1	PLATED
13	GASKET	See Table 2	1	
14	COVER BOLT	SUS304	2	
15	SPRING WASHER	SUS304	2	
16	GEAR BOX	FC250	1	
17	HAND WHEEL	ADC12	1	
18	BOLT	SWRCH	4	PLATED
19	SPRING WASHER	SWRH	4	PLATED
20				
21				
22				
23				
24				
25				



日付 DATE	SEP. 10, 2004	尺度 SCALE	FREE
使用压力 WORKING PRESSURE	Max 1.6 MPa Pe	使用温度*1: -10~70℃ WORKING TEMP. *2: -20~120	
耐压試験 SHELL TEST	2.4 MPa Pe	試験流体 TEST FLUID	WATER
弁座試験 SEAT TEST	1.8 MPa Pe	許容漏れ LEAKAGE	0 %

作成 DRAWN	検討 CHECKED	承認 APPROVED
S.Y	7.7	[Signature]

OKM 株式会社 オーケーエム
OKUMURA ENGINEERING corp.

図面番号 DRAWING NO. 618H GB 0180 EA FLOP. No. Hd-1an975

△ AUG. 03, 2009

SIZE	d	L1	L2	g	H	H1	H2	H3	A	B	W	GEAR SIZE	MASS (About)
80A	84	46	49	114	284.5	92.5	165	27	132	35	100	4K	5.9Kg
100A	100	52	55	136	305.5	98.5	180	27	132	35	100	4K	7.2Kg
125A	130	56	59	167	343.5	115.5	200	28	170	41	125	8K	10.1Kg
150A	154	56	59	192	374.5	130.5	215	29	197	51	160	16K	13.4Kg

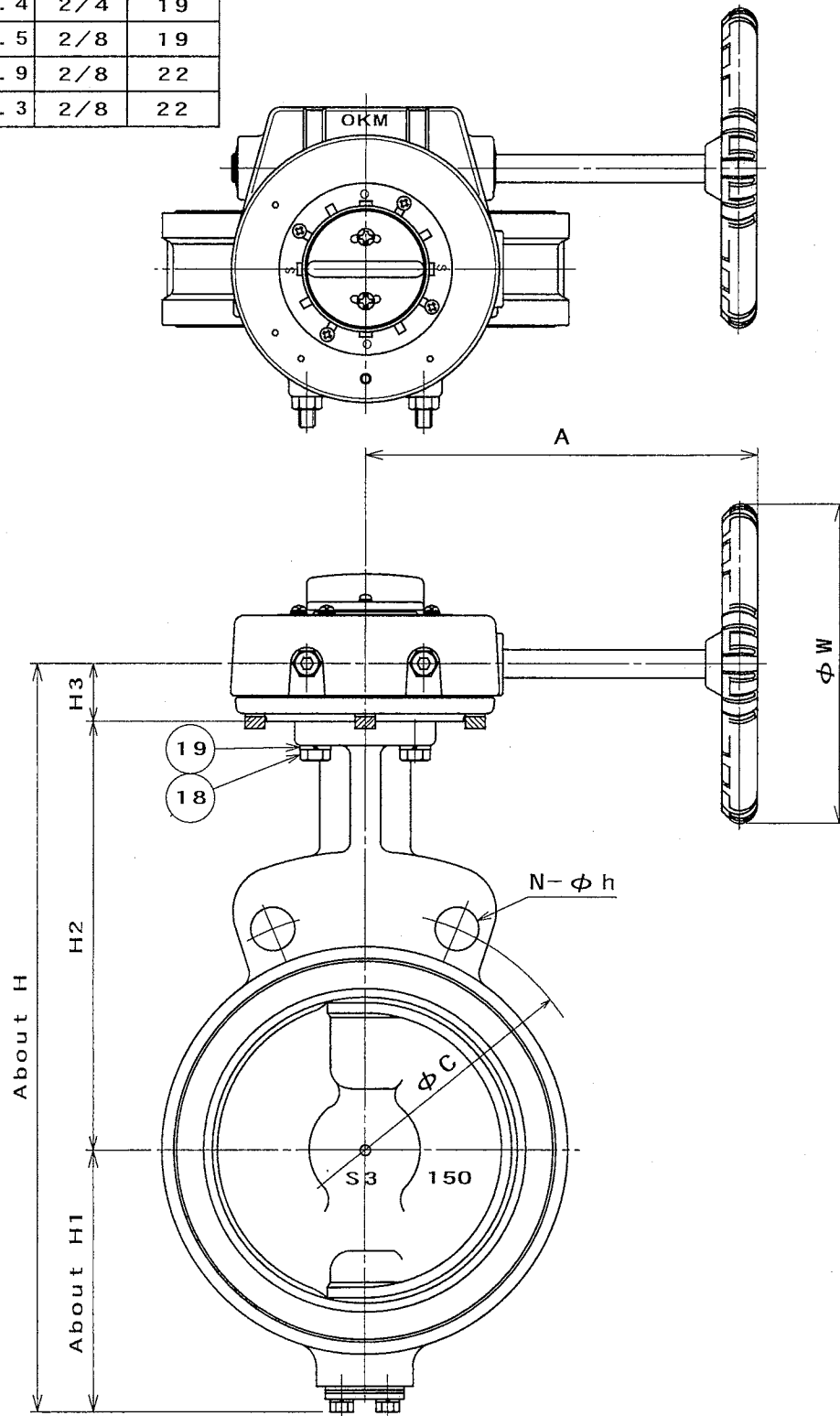
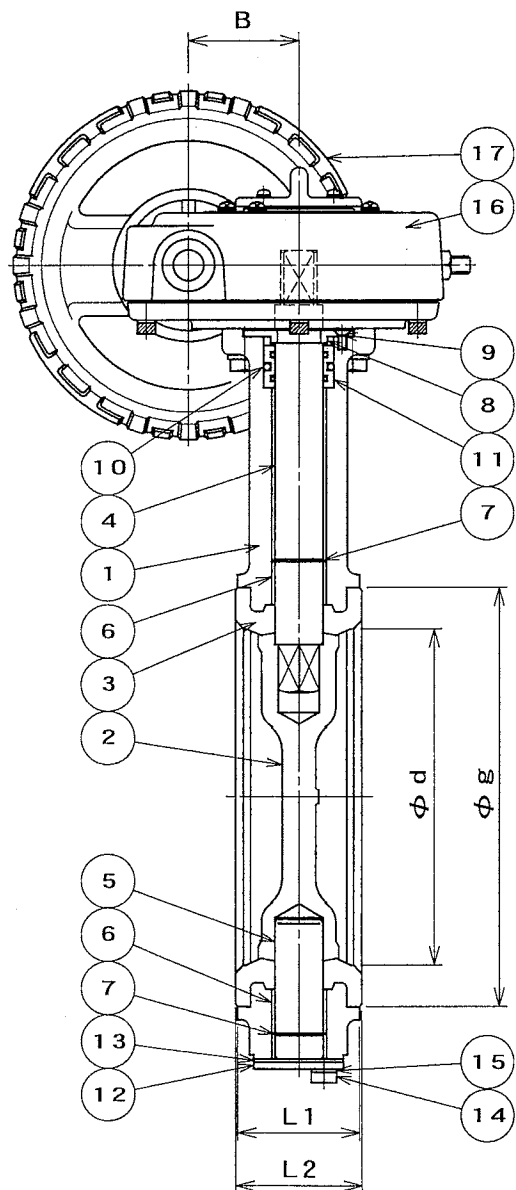
SIZE	JIS10K			JIS16K/20K			ASME125Lb/150Lb		
	C	N	h	C	N	h	C	N	h
80A	150	2/8	19	160	2/8	23	152.4	2/4	19
100A	175	2/8	19	185	2/8	23	190.5	2/8	19
125A	210	2/8	23	225	2/8	25	215.9	2/8	22
150A	240	2/8	23	260	2/12	25	241.3	2/8	22

Table 1	Table 2
SCS13	NBR *1
SCS14	EPDM*2

製番 MFG. NO. _____

名称及形式 MODEL 618H (80A~150A)
NAME AND TYPE BUTTERFLY VALVES WITH WORM GEAR OPERATOR

番号 NO.	部品名称 PARTS NAME	材質 MATERIAL	数量 Q. ty	備考 REMARKS
1	BODY	FCD450	1	
2	DISC	See Table 1	1	
3	SEAT RING	See Table 2	1	LINING
4	UPPER STEM	SUS420J2	1	
5	LOWER STEM	SUS420J2	1	
6	BUSH	PLASTIC	1set	
7	RING	SUS304	1set	
8	NECK BUSH	PLASTIC	1	
9	SCREW	SUS304	4	
10	O-RING	NBR	1set	
11	SEAL RING	PLASTIC	1	
12	COVER	SPCC	1	PLATED
13	GASKET	See Table 2	1	
14	COVER BOLT	SUS304	2	
15	SPRING WASHER	SUS304	2	
16	GEAR BOX	FC250	1	
17	HAND WHEEL	ADC12	1	
18	BOLT	SWRCH	4	PLATED
19	SPRING WASHER	SWRH	4	PLATED
20				
21				
22				
23				
24				
25				



日付 DATE	AUG. 12, 2004	尺度 SCALE	FREE
使用压力 WORKING PRESSURE	Max 1.6 MPa _{Pe}	使用温度 WORKING TEMP. #1	-10~70℃
耐圧試験 SHELL TEST	2.4 MPa _{Pe}	試験流体 TEST FLUID	WATER
弁座試験 SEAT TEST	1.8 MPa _{Pe}	許容漏れ LEAKAGE	0 %

作成 DRAWN	検討 CHECKED	承認 APPROVED
S.Y	7.7	J.S

OKM 株式会社オーケーエム
OKUMURA ENGINEERING corp.

図面番号 DRAWING NO.	618H GB 0179 EA	FLOP. No.	Hd-lan975
------------------	-----------------	-----------	-----------

△ AUG. 03, 2009

SIZE	d	L1	L2	g	H	H1	H2	H3	A	B	W	GEAR SIZE	MASS (About)
200A	200	60	63	242	452	168.5	245	38.5	255	73.9	200	63K	27.5Kg

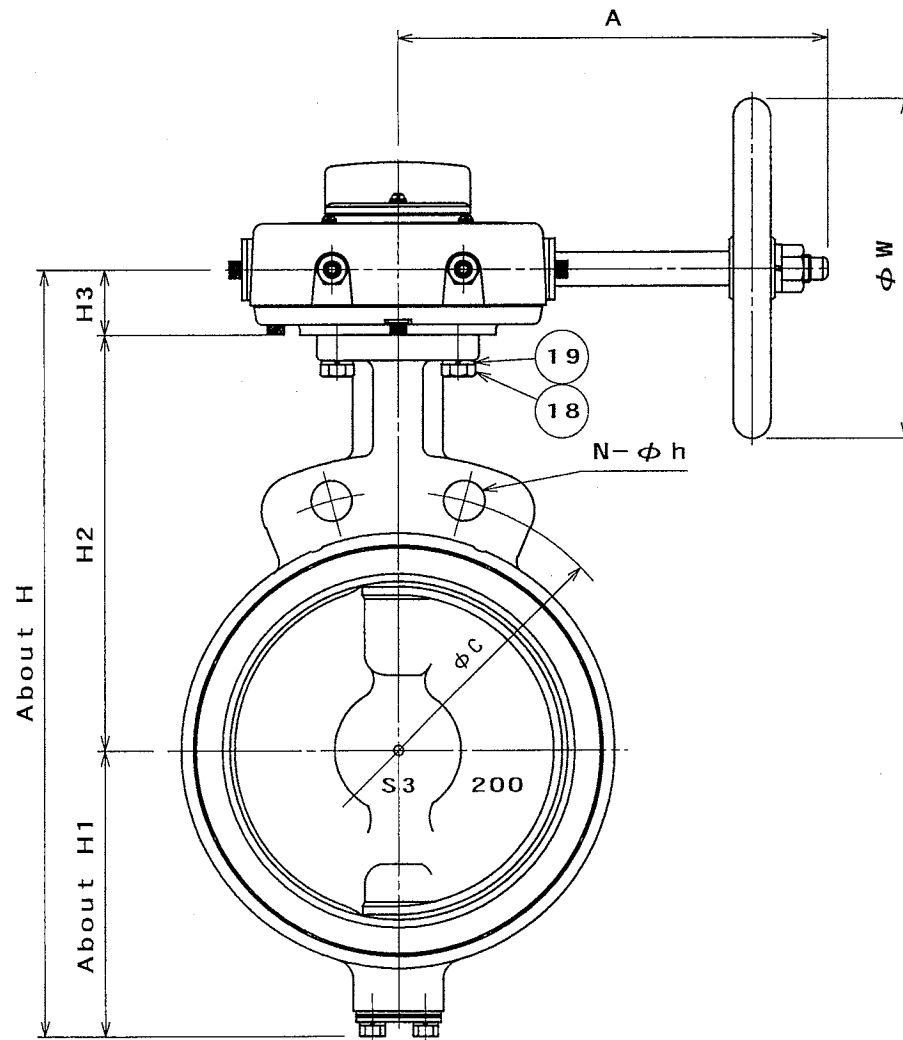
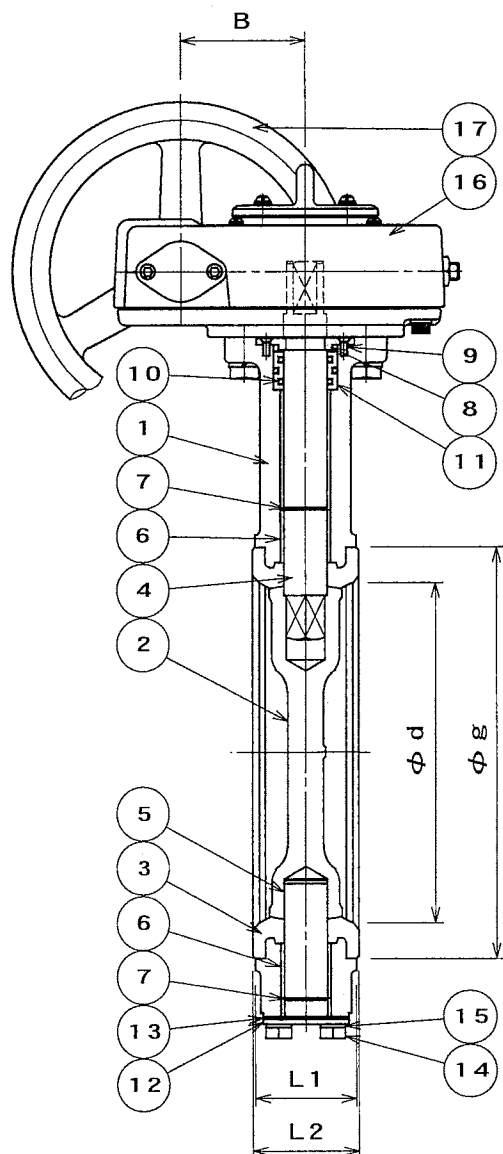
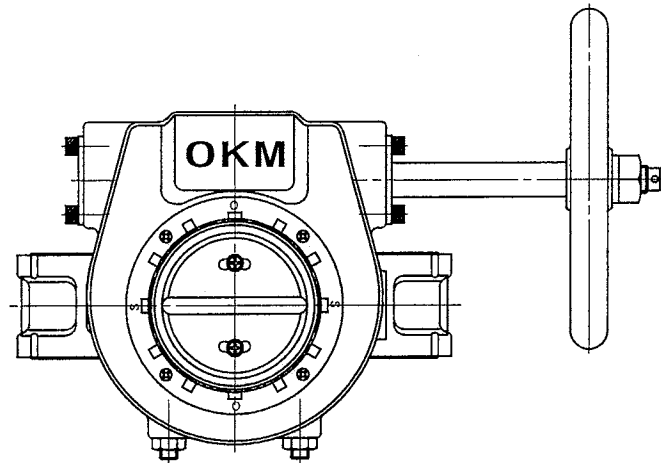
SIZE	JIS10K			JIS16K/20K			ASME125Lb/150Lb		
	C	N	h	C	N	h	C	N	h
200A	290	2/12	23	305	2/12	25	298.5	2/8	22

Table 1	Table 2
SCS13	NBR #1
SCS14	EPDM#2

製 番
MFG. NO.

名称及形式
NAME AND TYPE
MODEL 618H (200A)
BUTTERFLY VALVE WITH
WORM GEAR OPERATOR

番号 NO.	部品名称 PARTS NAME	材 質 MATERIAL	数量 Q, ty	備 考 REMARKS
1	BODY	FCD450	1	
2	DISC	See Table 1	1	
3	SEAT RING	See Table 2	1	LINING
4	UPPER STEM	SUS420J2	1	
5	LOWER STEM	SUS420J2	1	
6	BUSH	PLASTIC	1set	
7	RING	SUS304	1set	
8	NECK BUSH	PLASTIC	1	
9	SCREW	SUS304	4	
10	O-RING	NBR	1set	
11	SEAL RING	PLASTIC	1	
12	COVER	SPCC	1	PLATED
13	GASKET	See Table 2	1	
14	COVER BOLT	SUS304	2	
15	SPRING WASHER	SUS304	2	
16	GEAR BOX	FC250	1	
17	HAND WHEEL	FC250	1	
18	BOLT	SWRCH	4	PLATED
19	SPRING WASHER	SWRH	4	PLATED
20				
21				
22				
23				
24				
25				



日付 DATE	SEP. 10, 2004	尺 度 SCALE	FREE
使用 圧 力 WORKING PRESSURE	Max 1.6 MPa Pe	使用 温 度*1: WORKING TEMP. *1:	-10~70℃
耐 圧 試 験 SHELL TEST	2.4 MPa Pe	試 験 流 体 TEST FLUID	WATER
弁 座 試 験 SEAT TEST	1.8 MPa Pe	許 容 漏 れ LEAKAGE	0 %

作 成 DRAWN	検 討 CHECKED	承 認 APPROVED
S.Y	T.M	[Signature]

OKM 株式会社 オーケーエム
OKUMURA ENGINEERING corp.

図 面 番 号 DRAWING NO.	618H GB 0181 EA	FLOP. No. Hd-lan975
------------------------	-----------------	------------------------

△ AUG. 03, 2009

SIZE	d	L1	L2	g	H	H1	H2	H3	A	B	W	GEAR SIZE	MASS (About)
250A	246	68	71	299	525	203.5	283	38.5	255	73.9	200	63K	37.5Kg
300A	295	78	81	348	605	253.5	313	38.5	255	73.9	200	63K	49.0Kg

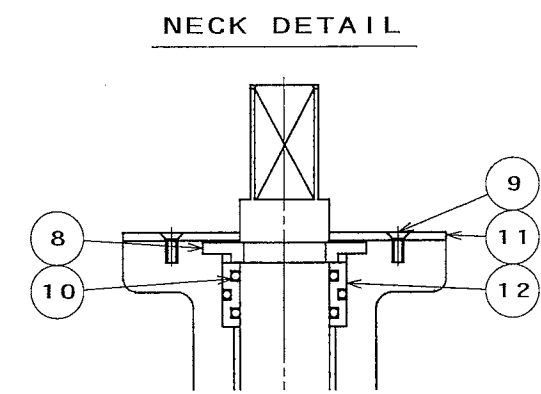
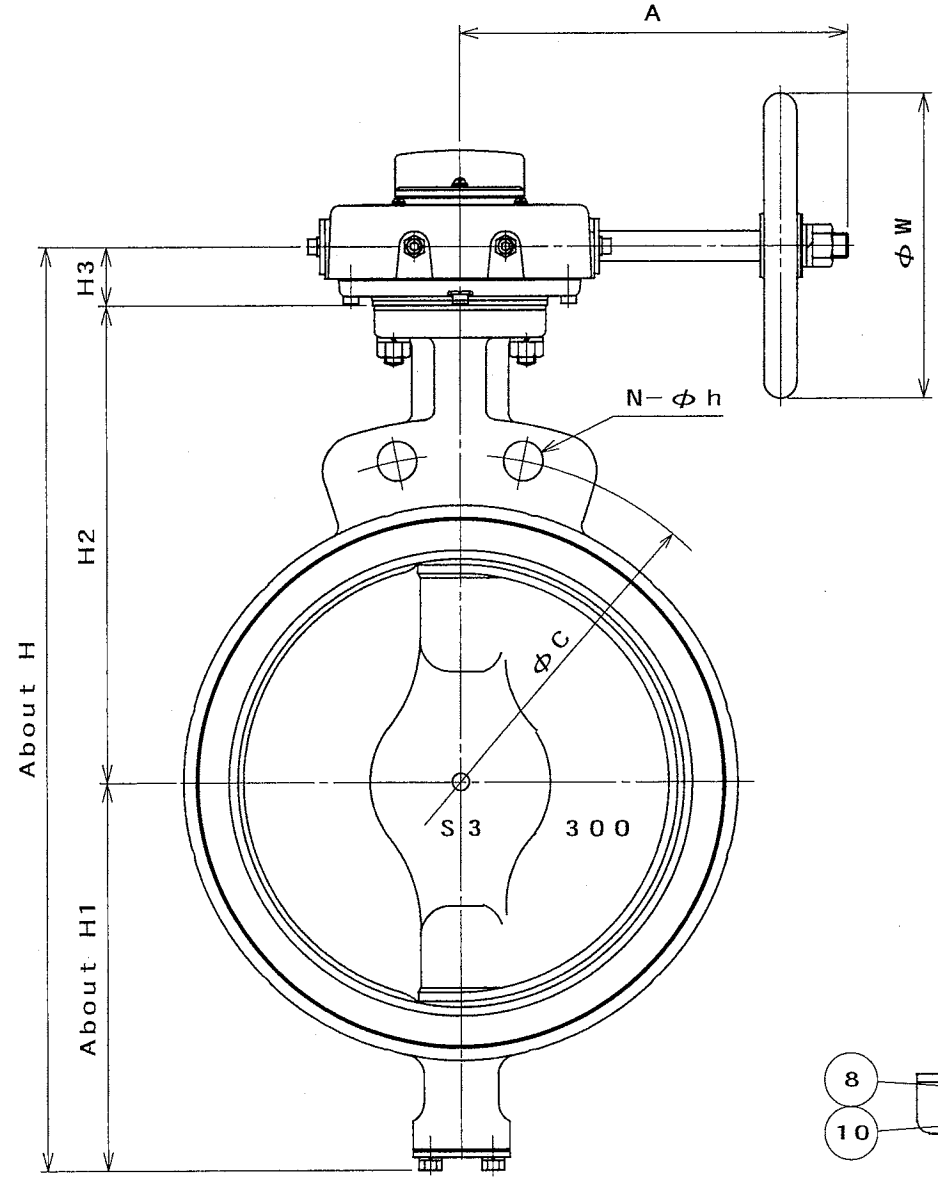
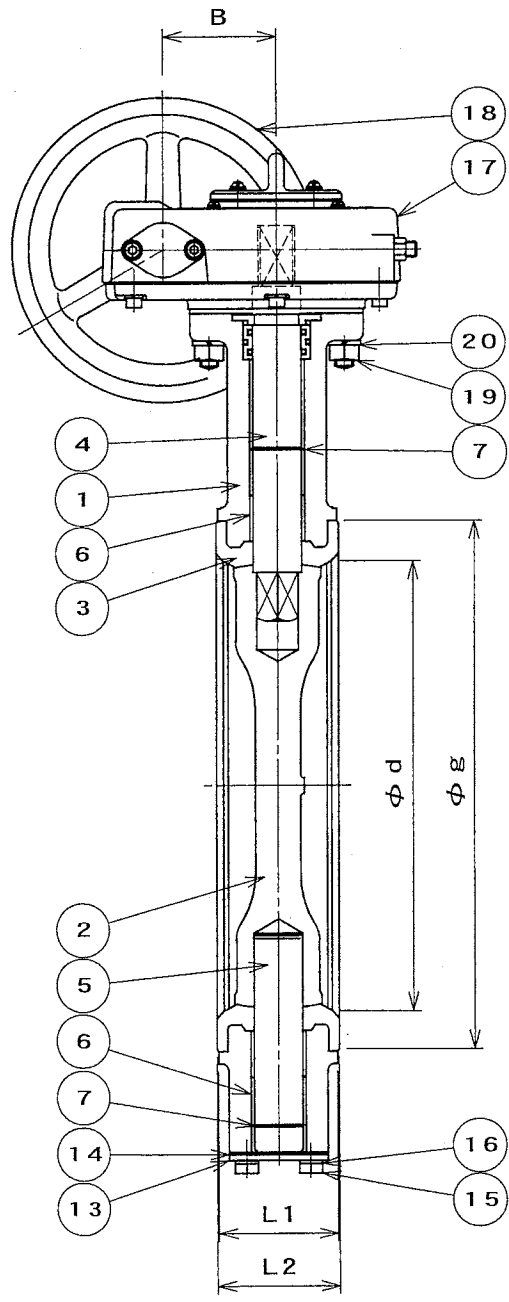
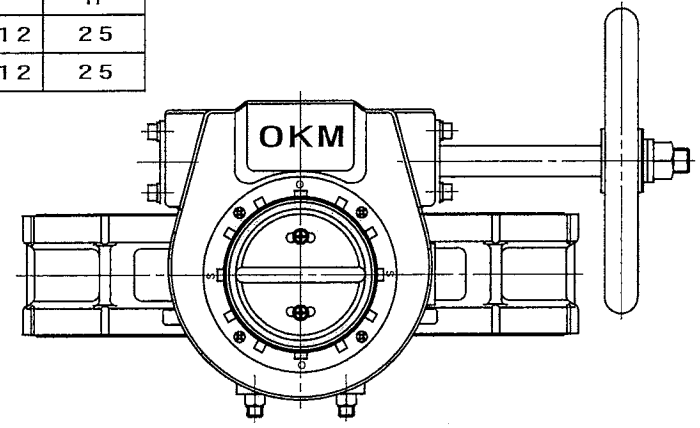
SIZE	JIS10K			JIS16K/20K			ASME125Lb/150Lb		
	C	N	h	C	N	h	C	N	h
250A	355	2/12	25	380	2/12	27	362.0	2/12	25
300A	400	2/16	25	430	2/16	27	431.8	2/12	25

Table 1	Table 2
SCS13	NBR *1
SCS14	EPDM*2

製番 MFG. NO. _____

名称及形式 MODEL 618H (250A, 300A)
NAME AND TYPE BUTTERFLY VALVES WITH WORM GEAR OPERATOR

番号 NO.	部品名称 PARTS NAME	材質 MATERIAL	数量 Q. ty	備考 REMARKS
1	BODY	FCD450	1	
2	DISC	See Table 1	1	
3	SEAT RING	See Table 2	1	LINING
4	UPPER STEM	SUS420J2	1	
5	LOWER STEM	SUS420J2	1	
6	BUSH	PLASTIC	1set	
7	RING	SUS304	1set	
8	NECK BUSH	PLASTIC	1	
9	SCREW	SUS304	2	
10	O-RING	NBR	1set	
11	PLATE	SPCC	1	PLATED
12	SEAL RING	PLASTIC	1	
13	COVER	SS400	1	PLATED
14	GASKET	See Table 2	1	
15	COVER BOLT	SUS304	4	
16	SPRING WASHER	SUS304	4	
17	GEAR BOX	FC250	1	
18	HAND WHEEL	FC250	1	
19	STUD BOLT, NUT	SGD SWRCH	4	PLATED
20	SPRING WASHER	SWRH	4	PLATED
21				
22				
23				
24				
25				



日付 DATE SEP. 10, 2004 尺度 SCALE _____

使用压力 WORKING PRESSURE Max 1.6 MPa Pe 使用温度*1: -10~70℃ WORKING TEMP. *2: -20~120℃

耐压試験 SHELL TEST 2.4 MPa Pe 試験流体 TEST FLUID WATER

弁座試験 SEAT TEST 1.8 MPa Pe 許容漏れ LEAKAGE 0%

作成 DRAWN S.Y. 検討 CHECKED 承認 APPROVED

OKM 株式会社 オーケーエム OKUMURA ENGINEERING corp.

△ AUG. 03, 2009

図面番号 DRAWING NO. 618H GB 0182 EA FLOP. No. Hd-lan975